

AFTER SALES SERVICE

Service Instruction Sheet

Part Number: 4000477327;



Product group: Battery Tool

Bulletin No: 2021.02.00000003

Created on: 15/02/2021

Published: ☒ Internally¹ ☒ Distributors² ☒ Sales companies³ ☒ Dealers⁴ ☒ Service Centers⁵

Subject: M18SISH Software update

The latest PC-Software can be downloaded at: https://d164iavpblhwri.cloudfront.net/M18SIC/MTCam_PC_SW.msi

The latest software can be downloaded here:

https://d164iavpblhwri.cloudfront.net/M18SIC/MTCam_hub_Softwareupdate.zip

Download, unzip the file, and copy it to a USB-Drive

Step 1

Open USB Cage:



Step 2

Enter USB-Drive into USB-A port:



¹ No communication outside TTI SBU's and EMEA

² Importers, distributors and service providers in a country (where there is no TTI SBU management)

³ SBU's

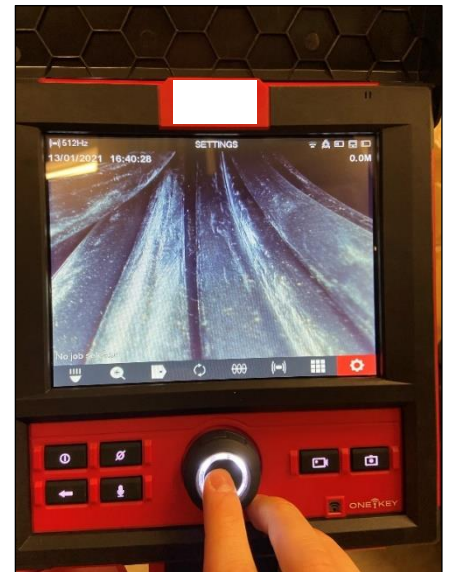
⁴ Network of customers who sell our tools in a country, managed by TTI SBU

⁵ Network of service center managed by a SBU



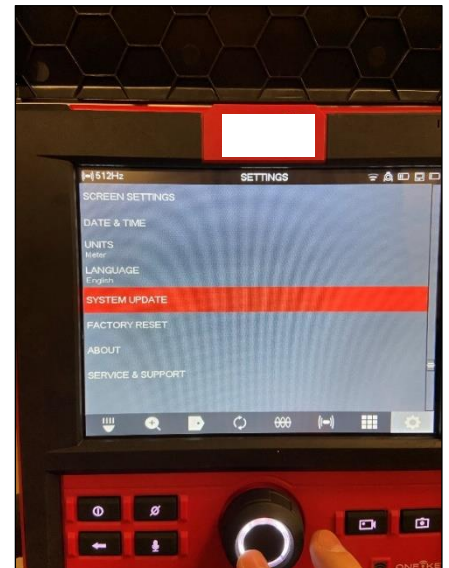
Step 3

Navigate to Settings:



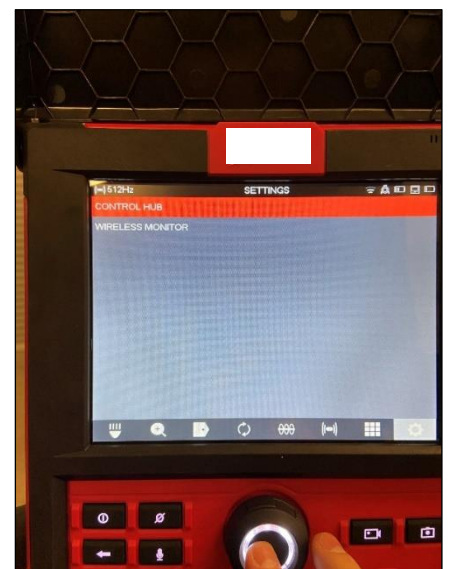
Step 4

Go to System Update:



Step 5

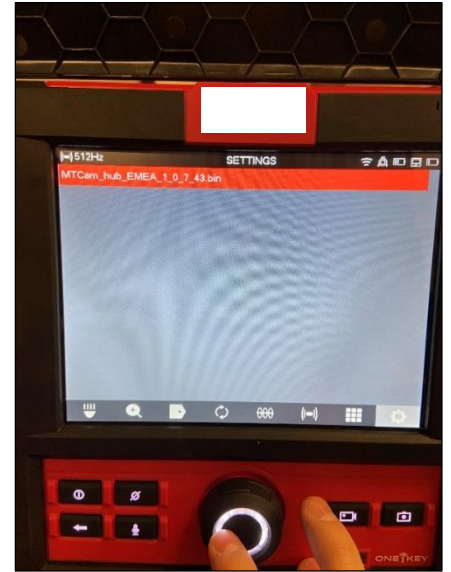
Go to Control Hub:





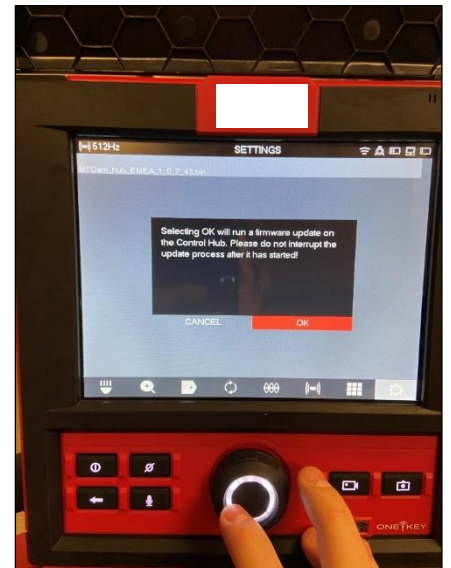
Step 6

Go to Update File:



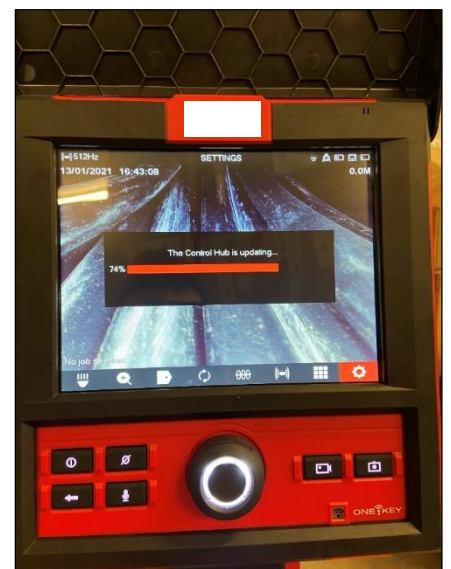
Step 7

Confirm Software Update:



Step 8

Smart Hub is updating
(takes 2-5 minutes)





Step 9

Smart Hub Restarts after Update is Complete

